

BNS

REAL ESTATE

Retail Space For Lease

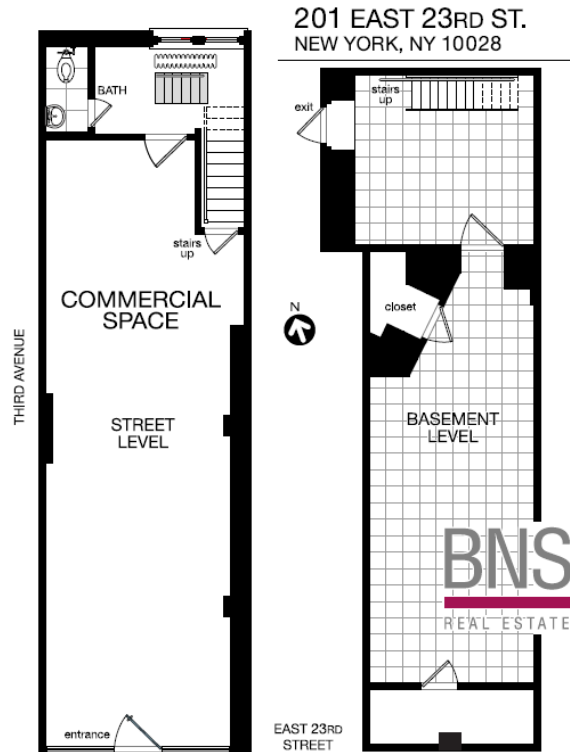
GRAMERCY - MANHATTAN

201 East 23rd Street

688 SF Retail

ASKING \$8000/month

This very high traffic, Gramercy, retail location is situated on a prime, high visibility corner on 23rd Street. Formerly occupied by Cell Phone Store, this site consist of ground floor plus basement. Clean vanilla box with high ceilings. Venting possible. Opportunity to keep along or combine with 2nd floor and neighboring space.



ALL INFORMATION FURNISHED REGARDING PROPERTY FOR SALE, RENTAL, OR FINANCING IS FROM SOURCES DEEMED RELIABLE, NO REPRESENTATION IS MADE AS TO THE ACCURACY THEROF AND IT IS SUBMITTED SUBJECT TO ERRORS, OMISSIONS, CHANGE OF PRICES, RENTAL OR OTHER CONDITIONS, PRIOR SALE, LEASE OR FINANCING, OR WITHDRAWAL WITHOUT FURTHER NOTICE.

WWW.BNSREALSTATE.COM

BNS
REAL ESTATE

Retail Space For Lease

GRAMERCY - MANHATTAN
201 East 23rd Street

Building Details:

DESCRIPTION: 688 SF Retail Space + Basement

BLOCK & LOT 00904-0001

FRONTAGE: 14' Frontage

AVAILABLE SPACE: 688 SF

ASKING RENT: \$8000/MTH

ZONING: C2-8A

USE: All uses considered

TAXES: Pro Rata Over Base Year

Investment Highlights:

PRIME CORNER LOCATION
EXTREMELY HIGH TRAFFIC
EXCELLENT ACCESS TO ALL TRANSPORTATION

Contact : **Alesya Stepushkina -212-772-7550**
Alesya@bnsnyc.com